

How can we show direction?

Maps show what things look like from above. They are very useful because they give information and show where places are. There are many different types of map. These include street maps, road maps, **atlas** maps and **Ordnance Survey** (OS) maps.

A **plan** is a type of map. Plans give detailed information about small areas. Places like schools, shopping centres, parks and leisure centres are shown on plans.

This section is about **direction**. The best way to show direction is to use the **points**

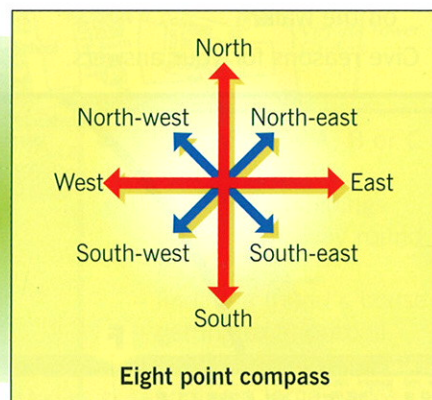
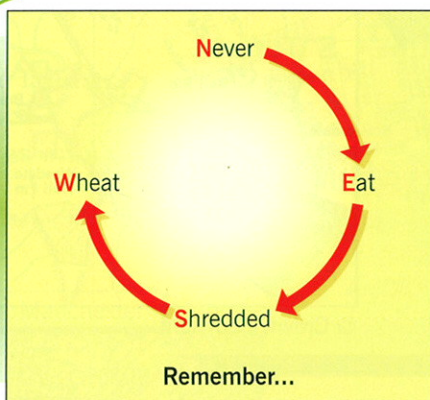
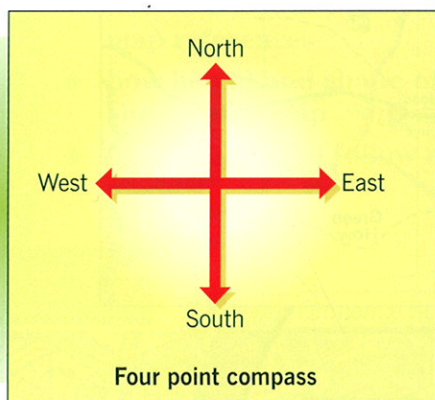
of the compass. There are four main points. These are north, east, south and west. You can remember their order by saying 'Never Eat Shredded Wheat'.

Between these four main points there are four other points. These are north-east, south-east, south-west and north-west.

Most maps have a sign to show the **north** direction. If there is no sign the top edge of the map should be **north**.



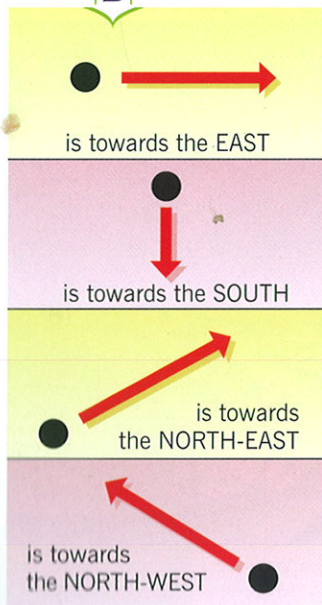
A



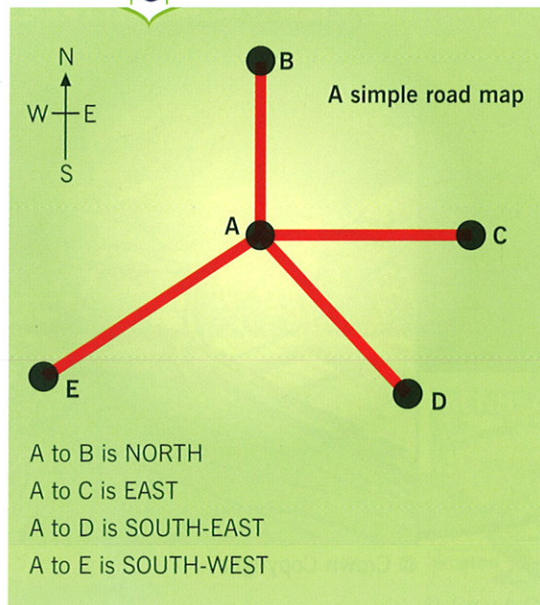
To give direction for a place you have to say which way you need to go to get there. The direction is the point of

the compass *towards* which you have to go. Diagrams **B**, **C** and **D** show you how to give a direction.

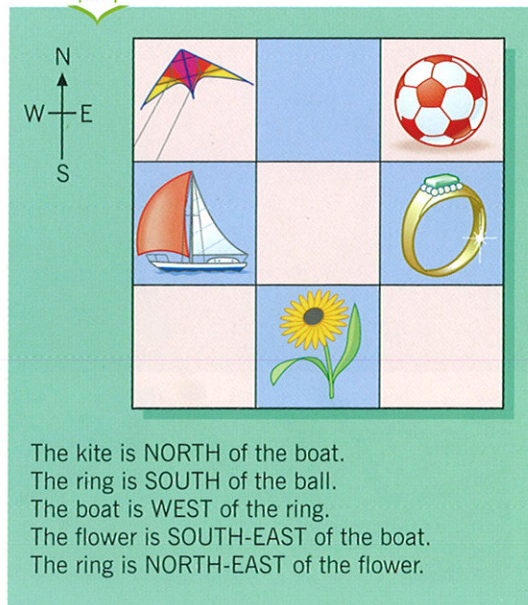
B



C



D



Activities

1 Draw the compass in diagram E and label the unmarked points.

2 Copy these drawings and complete the sentences below them. The first one has been done for you.

B



A

B is north of A

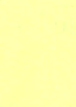
D



C

D is ... of C

E



F

F is ... of E

G



H

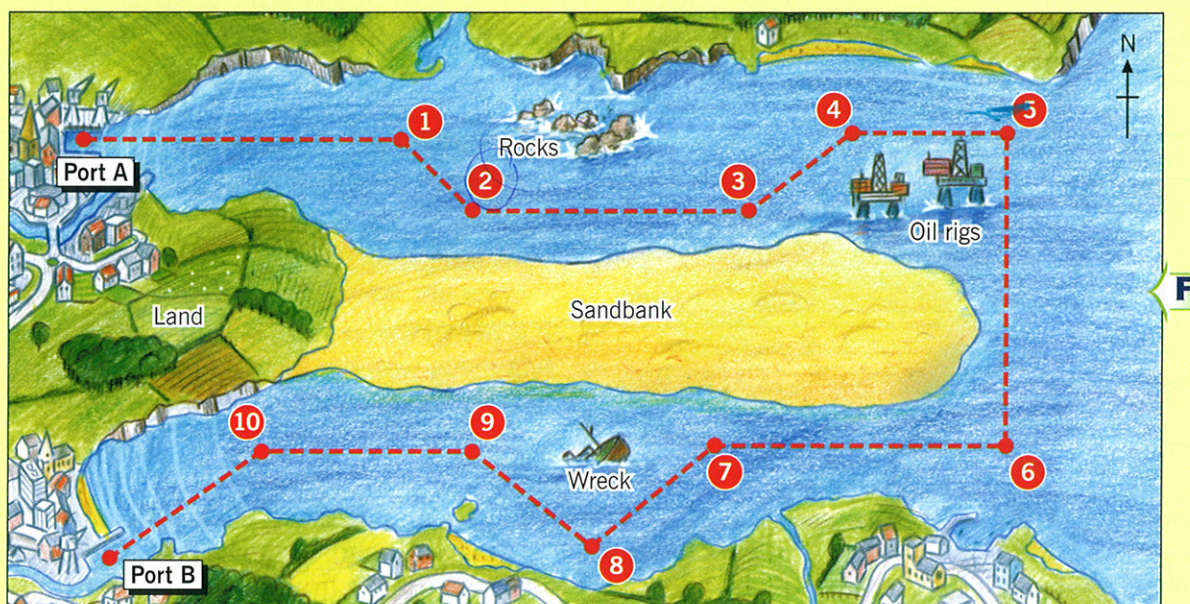
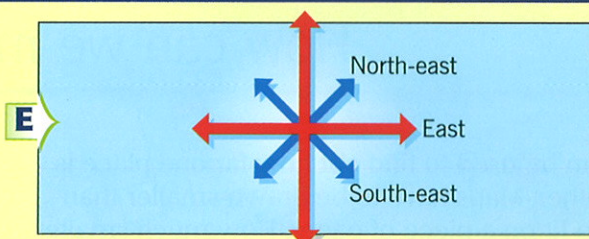
H is ... of G

I



J

I is ... of J



3 Study map F and give the following directions:

- from Port A to the rocks
- from the wreck to the oil rigs
- from the oil rigs to the rocks
- from the wreck to Port A
- from the rocks to the wreck.

4 a A ship has landed its cargo at Port A. It must go to Port B to reload. The course the ship must follow is shown by the dotted line on the map. Give the Captain compass directions to follow between each numbered point. Start like this: *Leave Port A. Go east to point 1. Go south-east ...*

- b Imagine that the sandbank has been cleared to make ship movement easier. Work out the best course from Port B to Port A. Give compass directions to follow that course.

EXTRA

You will need to use the Ordnance Survey map of the Cambridge area for this question. It is on the inside back cover.

Look at the villages near the bottom of the map. Give the following directions:

- from Foxton to Whittlesford
- from Foxton to Newton
- from Great Shelford to Whittlesford
- from Great Shelford to Haslingfield
- from Haslingfield to Harston.

Summary

Maps are a good way of giving information and showing where places are. Direction can be described by using the points of the compass.